



Optech

# REALM

REsults of  
Airborne  
Laser  
Mapping

Tel: [905] 660-0808

Web: [www.optech.ca](http://www.optech.ca)

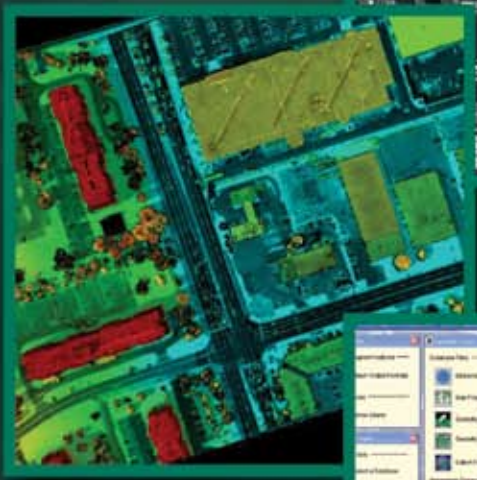
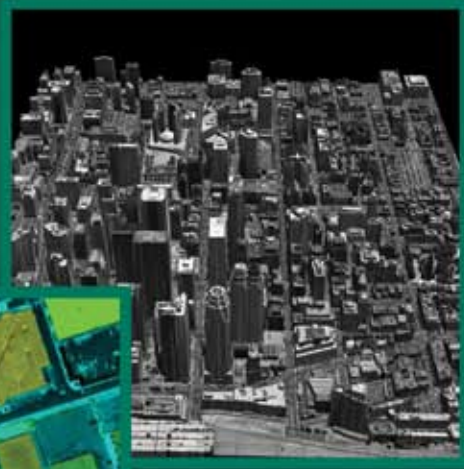
Email: [inquiries@optech.ca](mailto:inquiries@optech.ca)

Optech

IT'S ALL ABOUT THE SCIENCE

# REALM

## Results of Airborne Laser Mapping



**What it does:** REALM processes ALTM survey missions from start to finish.

**Why it's useful:** Fast, reliable and effective processing. REALM computes datum transformation parameters, and its POSProc integration provides post-processing of INS (Inertial Navigation System) information for increased accuracy.

**What it features:** Single, multi or complete-area processing capabilities for laser processing; support for ASPRS LAS file format; batch processing methodology; integration of Applanix's POSProc software (Position and Orientation System post-PROcessing).

**It's included!** REALM is included with all new ALTM systems.

**IT'S ALL ABOUT THE SCIENCE**