

# Corridor/Small Area Mapping

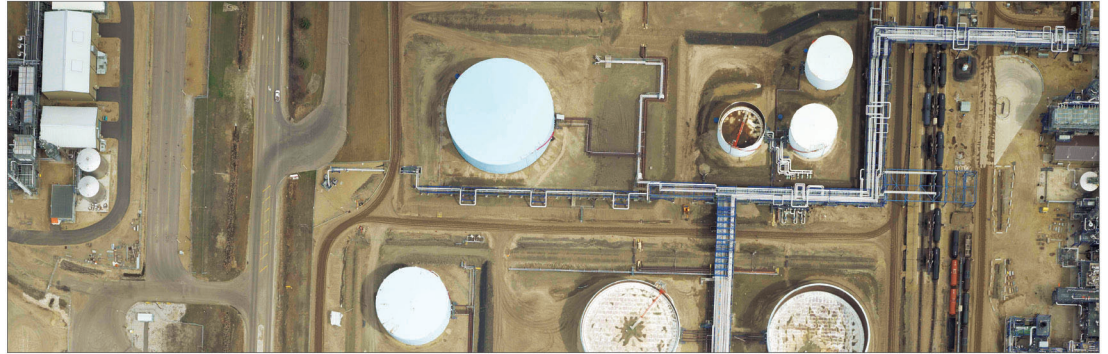
## D-8900 Aerial Digital Camera

### Applications

- Power line surveys
- Railway and road surveys
- City mapping
- Asset management

### Advantages

- Extended acquisition window
- True metric performance
- Adaptable & flexible
- Improved workflow productivity



**Standalone or integrated with lidar, the D-8900 is your complete corridor and small area mapping solution.**

With a footprint of 8,900 pixels across by 6,700 pixels along the flight line, the D-8900 is the perfect aerial digital camera for lidar integration or to perform small engineering surveys.

The D-8900 delivers the accuracy and clarity obtained through a decade of proven True Forward Motion Compensation technology. With a wide range of lens and filter options, it is easily configured for specialized projects and applications.

The D-8900 uses the same proven technology and calibration methodology as all Optech camera products, making its imagery suitable not only for visualization but also for engineering applications.

The bonus? It's all backed by Optech's industry-leading global 24/7 support.

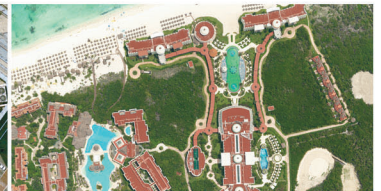
**The D-8900 is a complete solution that delivers business value ... today.**



 Corridor Mapping



 Small Area Survey

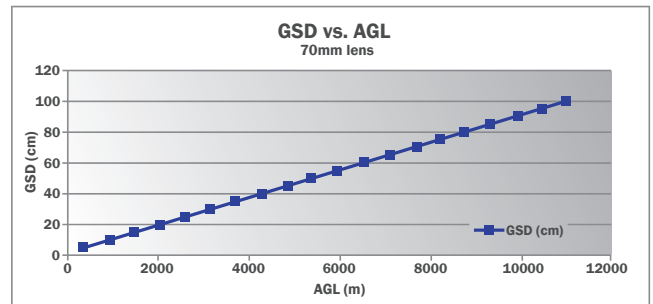
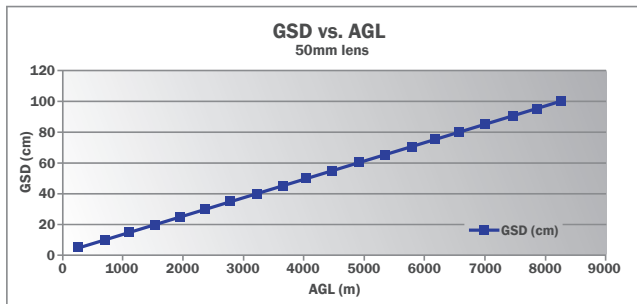


 Facility Asset Management

8,900 x 6,700



# D-8900 Aerial Digital Camera



Parameter	Specification
<b>Camera Head</b>	
Sensor type	60 Mpix full frame CCD, RGB
Sensor format (H x V)	8,984 x 6,732 pixels
Pixel size	6 μm x 6 μm
Frame rate	1 frame/2 sec.
FMC	Electro-mechanical, driven by piezo technology (patented)
Shutter	Electro-mechanical iris mechanism 1/125 to 1/500++ sec. f-stops: 5.6, 8, 11, 16
Lenses	50 mm/70 mm/120 mm/210 mm
Filter	Color and near-infrared removable filters
Dimensions (H x W x D)	200 x 150 x 120 mm (70 mm lens)
Weight	~4.5 kg (70 mm lens)
<b>Controller Unit</b>	
Computer	Mini-ITX RoHS-compliant small-form-factor embedded computers with AMD Turion™ 64 X2 CPU 4 GB RAM, 4 GB flash disk local storage IEEE 1394 Firewire interface
Removable storage unit	~500 GB solid state drives, 8,000 images
Power consumption	~8 A, 168 W
Dimensions	8.5" rack, 6U
Weight	~15 kg
<b>Image Pre-Processing Software</b>	
CaptureOne	Radiometric control and format conversion, TIFF or JPEG
Image output	8,984 x 6,732 pixels 8 or 16 bits per channel (180 MB or 360 MB per image)

U.S. Patent No. 7,365,774 B2  
European Patent No. EP 1 570 314 B1

**Optech Incorporated**  
300 Interchange Way, Vaughan ON, Canada L4K 5Z8  
Tel: +1 905 660 0808 Fax: +1 905 660 0829  
[www.optech.com](http://www.optech.com)

