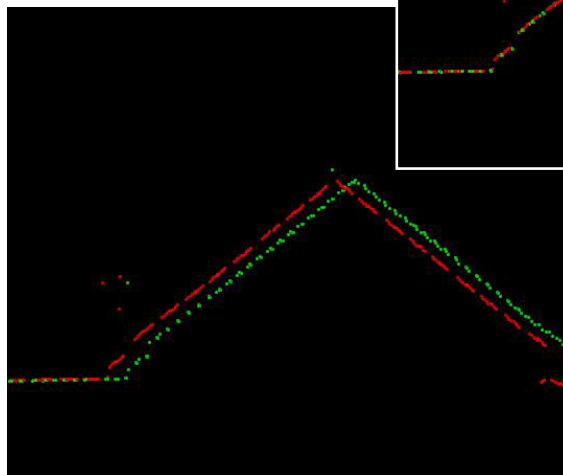


Optech LMS

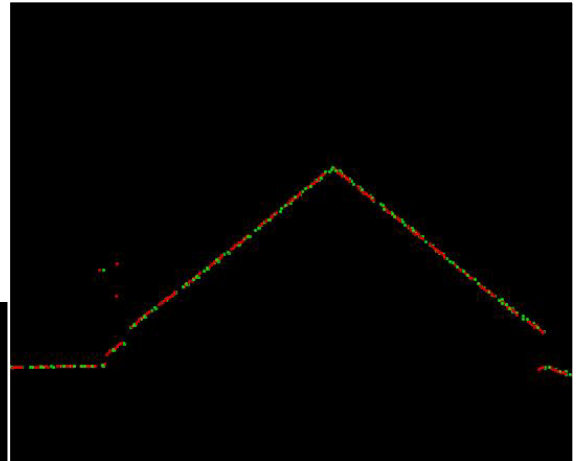
Information Sheet



Optech continues its commitment to high-quality XYZ data from its lidar products with an all-new streamlined workflow.



LAS-before



LAS-after



Optech LMS Lidar Mapping Suite

The Optech LMS Lidar Mapping Suite is a processing workflow designed specifically for high-volume production processing. Available in two versions, Standard and Professional, Optech LMS fully automates many tasks while offering exceptional flexibility and ease of use. From automated lidar calibration to extensive geodetic conversions to fast, distributed processing, Optech LMS is fully designed for lidar survey production.

Optech LMS Professional Edition builds on the feature sets in the Standard Edition so you can push lidar data accuracy to the next level. Using complex optical and mathematical models, Optech LMS Professional rectifies lidar data files with accuracy and quality that require no further refinement—thereby minimizing processing time and offering an alternative to third-party data adjustment tools. Accuracy reports, plots, graphs and visual analysis tools provide a variety of accuracy reporting capabilities. Coupled with robust underlying algorithms that are field-proven, Optech LMS eliminates the need for independent calibration regimes.

Optech LMS



Standard Edition Advantages*	Benefits
Batch processing	Optech LMS focuses strongly on production processing by incorporating a fully automated batch-mode capability.
Geodetic conversion	Optech LMS provides access to the complete Blue Marble library of coordinate transformation, geoidal modeling and datum adjustment capabilities, for direct output in the local reference frame.
Parallel processing	With the ability to take advantage of the processing power of multiple CPUs, Optech LMS maximizes processing efficiency, enabling simultaneous processing of multi-mission data collections.
Accuracy reporting	Optech LMS generates accuracy reports and graphs with the input of control planes and points.

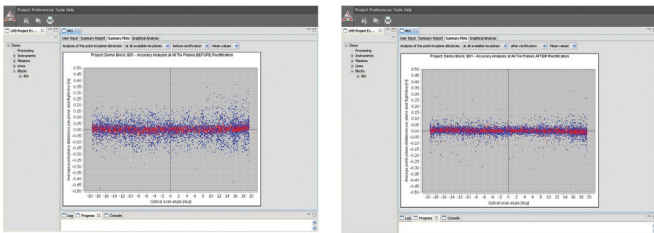
* Available for both ALTM and Lynx Mobile Mapper.

Professional Edition Advantages**	Benefits
<i>Includes all the Standard Features plus:</i>	
Distributed processing	Optech LMS takes processing efficiency to the next level by distributing tasks to PCs within your network.
Lidar rectification	Precise instrument optical equations with a dynamic sensor error model deliver data that is free of systematic errors. Optech LMS Professional delivers consistent high-quality data sets that significantly exceed advertised system accuracy specifications.

** Available for ALTM only.

Key Features

- Includes pre- and post-rectification results, as well as relative and absolute accuracy comparisons. Project deliverables include reports, plots and graphic comparisons.
- Includes LAS 1.1 and 1.2 output formats.
- Processes data from ALTM models 2050, 3033, 3070, 3100, Orion, Gemini and Pegasus, and Lynx Mobile Mapper models V200 and M1.
- Automated overlap interrogation and automatic calibration based on extracted features in overlap areas.
- Improves overall data accuracy.
- Calibration routines do not require specialized flight/survey regimes.
- Incorporates batch processing capability to minimize user interaction. After setting up the batch tasks, you can send tasks to multiple processing nodes to maximize processing efficiency.
- Available in 32- and 64-bit versions. Compatible with Microsoft Windows NT, 2000, XP and 7.



Lidar point distribution before and after rectification. The rectified model contains Root Mean Square Error (RMSE) values that are significantly lower than those in the unrectified model.

Optech Incorporated
 300 Interchange Way, Vaughan ON, Canada L4K 5Z8
 Tel: +1 905 660 0808 Fax: +1 905 660 0829
www.optech.ca

Optech
 Lidar Imaging Solutions