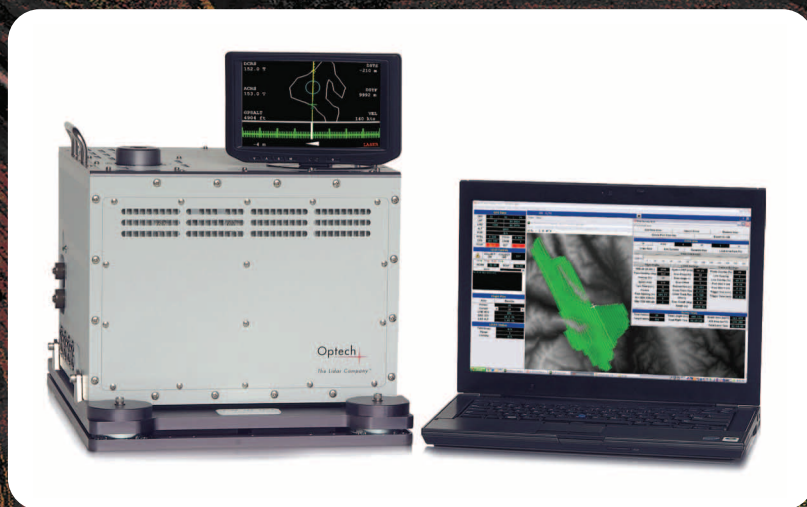


New!



ORION M/C 300

The new Orion M/C 300 offers clients the industry's best solution for tight-tolerance corridor and engineering mapping applications that demand maximum data precision and accuracy—all while maintaining Orion's superb small-target detectability. Building on the performance of the Orion M/C 200, the new M/C 300's enhancements include:

Multipulse

A 2x increase in collection efficiency or point density—fly higher at a given laser pulse rate, or double your pulse rate for a given altitude.

300-kHz Laser

A 50% increase in point density with 300 kHz of on-the-ground continuous data sampling capability, independent of the scanner FOV.

New User-Selectable Scan Patterns

Choose between sawtooth and sinusoidal scan patterns, for point distribution options that match your application and density requirements.

90-Hz Scanner

Increased scan frequencies improve point distribution at higher laser pulse rates and/or lower altitudes.

220-Channel GPS Receiver

Next-generation POS technology enables simultaneous logging of many GPS constellations for maximum global coverage and accuracy.

Variable Laser Power

Fly with Orion M at even lower operational altitudes, for a wider performance envelope with greater application flexibility.

Waveform Digitizer Compatible

Now fully compatible with Optech's portable 12-bit IWD-2 Intelligent Waveform Digitizer, for applications requiring enhanced vertical density or improved surface classification.

Optech Incorporated

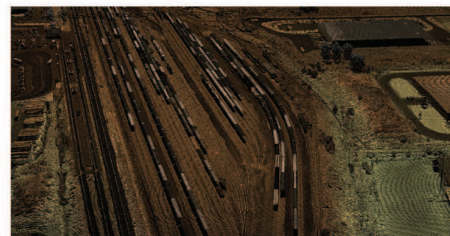
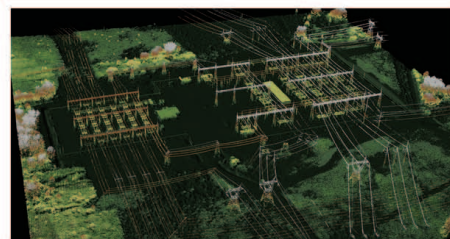
300 Interchange Way, Vaughan ON, Canada L4K 5Z8

Tel: +1 905 660 0808 Fax: +1 905 660 0829

www.optech.com

© Optech Incorporated. E&OE. Information subject to change without notice. Printed in Canada. 110923

NOW 300 kHz



Optech

Lidar Imaging Solutions