

NEWS RELEASE

— For Immediate Release —

September 18, 2007



The Lidar Company™

Optech Announces New Profile Scanning Feature for the ILRIS-36D Scanner

Toronto, Canada – Optech Incorporated, a provider of advanced lidar survey instruments, announced today a new Profile Scanning feature to be implemented with its ILRIS-3₆D scanner.

The new Profile Scanning feature is designed to significantly reduce ILRIS-3₆D scanning and post processing time by eliminating the need for alignment overlaps. New software now synchronizes the rotational speed of the pan and tilt base with vertical scanning action to capture a complete or selected portion of a continuous 360o scene. With this new feature, the rotational speed of the base is automatically monitored, and is determined by the spot spacing or step size selection. The unit can also be run in manual mode to enable the operator to specify the rotational speed. Software alignment is still available when scenes are scanned from multiple scanner set-up positions.

Profile Scanning is especially effective for building interiors and extremely large infrastructure projects, but will also significantly reduce scanning and post processing time for most applications.

“With Optech’s sustained commitment to product improvement, Profile Scanning will improve overall workflow efficiency and post processing throughput without any additional cost to the user,” said Brent Gelhar, Vice President Sales and Product Strategy.

This feature will be available with all new deliveries of the ILRIS-3₆D scanner system.

About Optech Incorporated

Optech is the world leader in the development, manufacture and support of advanced laser-based survey instruments. We offer client-driven lidar solutions in airborne terrestrial mapping, airborne laser bathymetry, laser imaging, mine cavity monitoring, industrial process control as well as space-qualified sensors for orbital operations and planetary exploration.

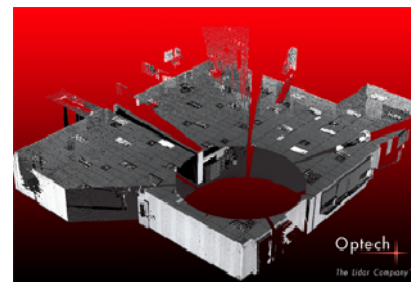
For further information, please contact:

Dave Adams

Product Manager, Industrial Products & 3D Imaging
Optech Incorporated
300 Interchange Way
Vaughan, ON Canada L4K 5Z8
Tel: [905] 660-0808
www.optech.ca



The ILRIS 3₆D Intelligent Laser Ranging and Imaging System



ILRIS 3₆D profile scan of building interior

United States: 7225 Stennis Airport Drive, Suite 400 • Kiln MS 39556 USA
Tel: [228] 252-1004 • Fax: [228] 252-1007

Canada: 300 Interchange Way • Vaughan, ON Canada L4K 5Z8
Tel: [905] 660-0808 • Fax: [905] 660-0829

www.optech.ca