

NEWS RELEASE

— For Immediate Release —
September 24, 2007



Infoterra Ltd. to take delivery of Lynx Mobile Mapper

Toronto, Canada – Optech Incorporated, a manufacturer of advanced lidar survey instruments, announced today that Infoterra Ltd., a leader in the provision of geospatial products and services based in the United Kingdom, has purchased Optech's newly released LYNX Mobile Mapper™.

Infoterra Ltd., a long-time strategic partner of Optech Incorporated, has purchased the LYNX Mobile Mapper to further grow its service business, and complement its suite of airborne lidar and photogrammetric sensors, which include Optech's ALTM Gemini airborne mapper. The LYNX Mobile Mapper, a vehicular-mounted lidar system incorporating Optech's iFLEX™ technology, represents the next generation in advanced lidar data capturing solutions.

"Given Infoterra's spatial data acquisition pedigree and its proven ability to maximize the results achieved with new technology, we are excited to have them as an early adopter client for the LYNX Mobile Mapper," said Don Carswell, President of Optech Incorporated.

Infoterra Ltd., an EADS Astrium company, has a long history of staying on the cutting edge of technology to provide its clients with the most accurate and robust geospatial data available. The purchase of the LYNX Mobile Mapper will continue this trend.

"Optech's mobile lidar will provide us with a unique data collection system, allowing urban environments and road corridors to be rapidly mapped in high detail," Infoterra's Technical Director, Anthony Denniss commented. "High accuracy mobile lidar will provide Infoterra with the basis for a series of 'next generation' data products and services."

About Optech Incorporated

Optech is the world leader in the development, manufacture and support of advanced laser-based survey instruments. We offer client-driven lidar solutions in airborne terrestrial mapping, airborne laser bathymetry, laser imaging, mine cavity monitoring, industrial process control as well as space-qualified sensors for orbital operations and planetary exploration.

About Infoterra Ltd.

Infoterra Ltd. is a leading provider of geographic information products and services. Its portfolio of geographic information solutions includes airborne and satellite data acquisition, geo-information creation, database management and outsourced hosting. Infoterra provides geospatial knowledge to companies worldwide to help them make informed decisions. The company has major customers in communications, utilities, engineering, agriculture, defence and oil, gas & mineral exploration.

For further information, please contact:

Albert Iavarone

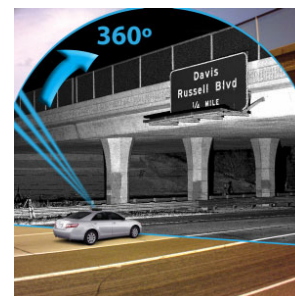
Product Manager, Mobile Solutions
Optech Incorporated
300 Interchange Way, Vaughan, ON Canada L4K 5Z8
Tel: [905] 660-0808
www.optech.ca

Sarah Haslam

Infoterra Ltd,
Tel: +44 (0)116 273 2300
www.infoterra.co.uk



The LYNX Mobile Mapper™ sensor head



Optech's LYNX Mobile Mapper™ provides a continuous multiple perspective 360° FOV

United States: 7225 Stennis Airport Drive, Suite 400 • Kiln MS 39556 USA
Tel: [228] 252-1004 • Fax: [228] 252-1007

Canada: 300 Interchange Way • Vaughan, ON Canada L4K 5Z8
Tel: [905] 660-0808 • Fax: [905] 660-0829

www.optech.ca