

NEWS RELEASE

— For Immediate Release —

September 21, 2007



The Lidar Company™

SINECO to take delivery of LYNX Mobile Mapper

Toronto, Canada – Optech Incorporated, a provider of advanced lidar survey instruments, announced today that SINECO, based in Italy, has purchased the newest addition to Optech's family of lidar products, the LYNX Mobile Mapper™.

SINECO's choice of Optech's LYNX Mobile Mapper is driven by a desire to grow their service business in corridor surveying with the ability to complete projects far more rapidly than with any other technology. A revolutionary mobile lidar solution, the LYNX Mobile Mapper features Optech's proprietary iFLEX™ technology built on over 33 years of lidar design and manufacturing heritage.

"Given SINECO's history in the Italian market and the aggressive approach they take in adopting new technology, we are excited to have them as the first client for the LYNX Mobile Mapper," said Don Carswell, President of Optech Incorporated. "Their input into the design has been of great value."

Agostino Spoglianti, SINECO's CEO, cites his company's determination to be at the cutting edge of technology with a proven reliable partner in the marketplace. "In order to perform asset management and especially road inventory in the best possible way, it is necessary to be in the forefront of scientific progress and technology," he said.

"The development of a mobile laser scanner has been a very interesting challenge, and the collaboration with Optech, the best authority in the international market for laser scanners, represented a great opportunity for us. With the "LYNX" project they have proven once again to be extremely qualified, great professionals, and absolutely the best choice."

About Optech Incorporated

Optech is the world leader in the development, manufacture and support of advanced laser-based survey instruments. We offer client-driven lidar solutions in airborne terrestrial mapping, airborne laser bathymetry, laser imaging, mine cavity monitoring, industrial process control as well as space-qualified sensors for orbital operations and planetary exploration.

About SINECO

Since 1987, SINECO S.p.A., an engineering company of the ASTM Group, has been operating with special attention to the control and planning of maintenance interventions for important transport infrastructures. SINECO's main mission is to provide suitable support to road and railway network operators in the identification, design, planning and maintenance of transport infrastructures and in overall asset management while using innovative technologies. SINECO has also specialized in road inventory and has surveyed almost 40% of all Italian National Roads, thus building the national geodatabase.

For further information, please contact:

Albert Iavarone

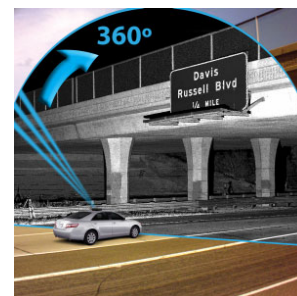
Product Manager, Mobile Solutions
Optech Incorporated
300 Interchange Way, Vaughan, ON Canada L4K 5Z8
Tel: [905] 660-0808
www.optech.ca

Federica Zampa

Project Manager
SINECO S.p.A.
Via Felice Casati 1/A
20124 – Milano (ITALY)
Tel: +39 02 54 25 901
www.gruppo-sina.it



The LYNX Mobile Mapper™ sensor head



Optech's LYNX Mobile Mapper™ provides a continuous multiple perspective 360° FOV

United States: 7225 Stennis Airport Drive, Suite 400 • Kiln MS 39556 USA
Tel: [228] 252-1004 • Fax: [228] 252-1007

Canada: 300 Interchange Way • Vaughan, ON Canada L4K 5Z8
Tel: [905] 660-0808 • Fax: [905] 660-0829

www.optech.ca