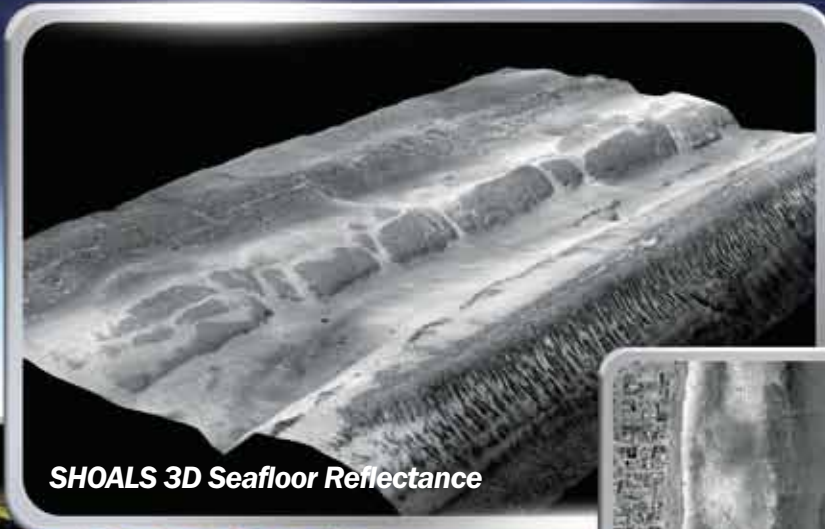


THE ONE-FLIGHT SOLUTION



SHOALS-3000

Airborne Lidar Bathymeter
Your total coastal mapping solution

SHOALS-3000 lets you capture it all

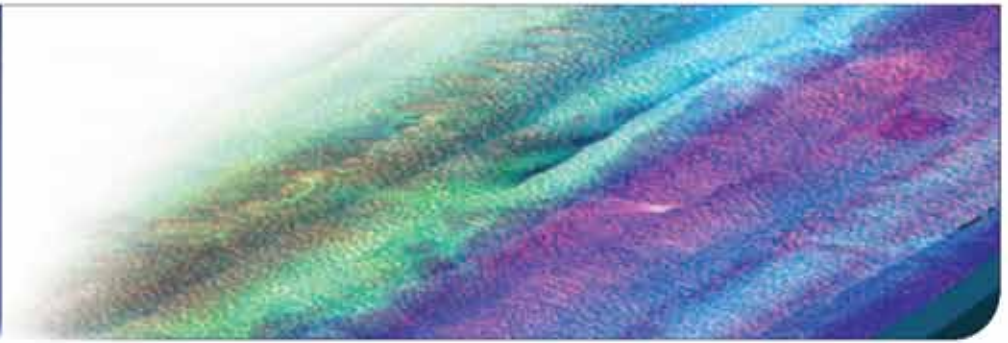
- 3D bottom reflectance
- SHOALS derived K map
- Classified topography
- Digital color imagery
- Depth measurements accurate to IHO Order 1

Features

- Integrated hydrographic and topographic mapping capabilities
- Highest data collection rate available
- Hyperspectral camera



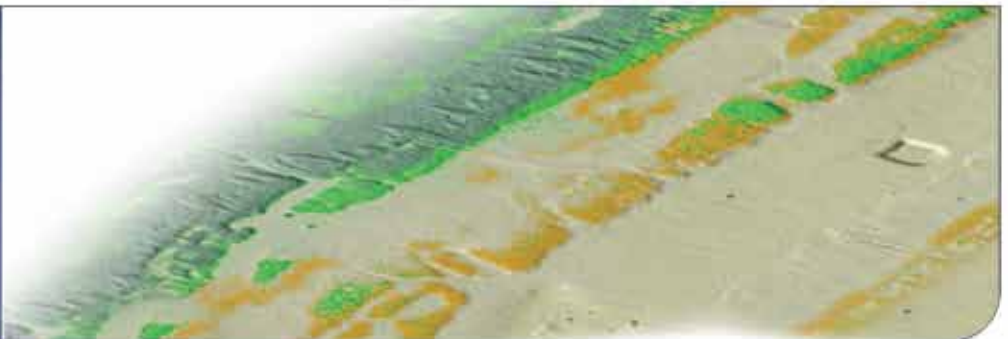
**Hyperspectral
At-Sensor Radiance**



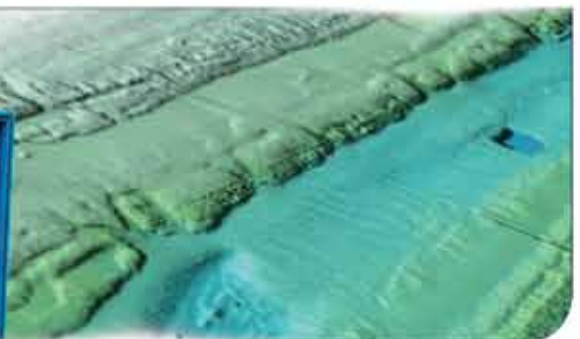
**Hyperspectral
Seafloor Reflectance**



**SHOALS/Hyperspectral
Classified Seafloor**



SHOALS DEM



SHOALS data processed with REA software