

Business Expansion Solution

T-MS Aerial Digital Camera

Applications

- Bathymetry
- Vegetation analysis
- Feature extraction
- Land segmentation and classification

Advantages

- Expanded operations
- Revenue growth
- Superior image quality
- Improved workflow productivity



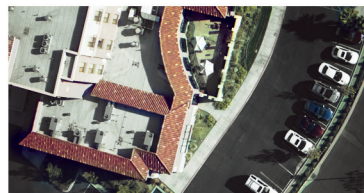
The T-MS is part of a new portfolio of airborne survey products that creates value by expanding your business opportunities

Based on a platform product line concept, the T-MS can be combined and integrated with numerous Optech products to create a unique airborne imaging solution to match your business needs.

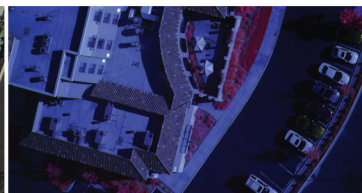
The T-MS is based on a patented 3-CCD camera design with color-separating optics, which work together with large-format progressive-scan CCD sensors to maximize image resolution, dynamic range, and field of view. The T-MS shares the core features of all Optech cameras, including the ruggedized construction of the sensor/lens assembly, integrated kinematic mounts, and geometric and radiometric calibration.

The bonus? It's all backed by Optech's industry-leading global 24/7 support.

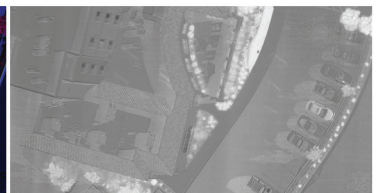
The T-MS is a complete solution that delivers business value ... today.



 Color View



 Infrared View

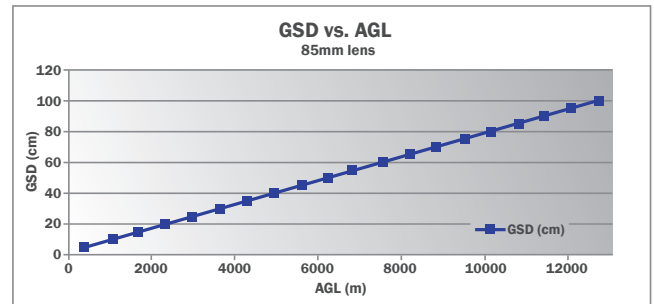
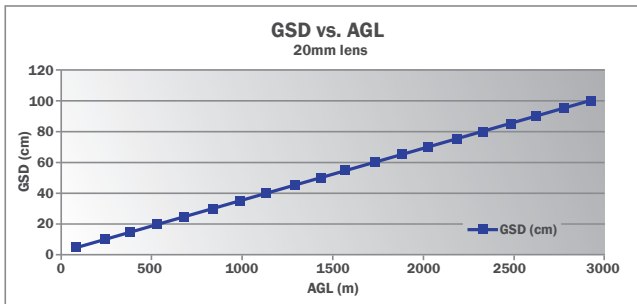


 NDVI View

Multispectral



T-MS Aerial Digital Camera



Parameter	Specification
Sensor Specifications	
Image device	1-inch interline transfer CCD
Picture elements (H x V)	1,920 x 1,080
Pixel size	7.4 μm x 7.4 μm
Pixel clock rate	25 MHz
Sensing area	14.2 x 8.0 mm
Frame rate	~4 frames/second
Digital image output	Camera Link
Signal/noise	60 dB
Electronic shutter	Range: 1/10,000 - 1/10 sec., controlled via RS-232 input
Gain selection	Range: 0-36 dB, controlled via RS-232 input
External trigger input	Edge or level, three modes
External trigger source	BNC or FrameGrabber (optical isolator on BNC)
Exposure control	Manual or automatic
White balance	Manual or semi-automatic
Noise reduction	Correlated double sampling
Usability features	Digital crosshairs, color-plane multiplexing
Programmable functions	Gain, exposure time, multiplexing, trigger modes, custom processing
Video preview	Progressive scan RGB (1280 x 1024 max display resolution), Gamma correction, 2x and 4x digital zoom
Operating temperature	0-50 °C
Operating voltage	12 VDC
Power consumption	15 W
Weight	~2.8 kg
Camera back dimensions	149 x 89 x 97 mm
Controller Unit	
Computers	DGX controller with Camera Link interface
Removable storage unit	~500 GB solid state drives, 75,000 images
Power consumption	65 W
Dimensions	19" rack, 2U
Weight	~9.3 kg

Optech Incorporated
 300 Interchange Way, Vaughan ON, Canada L4K 5Z8
 Tel: +1 905 660 0808 Fax: +1 905 660 0829
www.optech.com

